


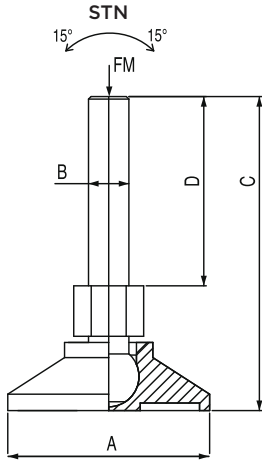
501 (60Ø) PLASTİK PABUÇ TABANI (6 KÖŞELİ METAL ÇİNKO KAPLAMA)

HARD TYPE ARTICULATED FEET (WITH SNAP RING)

Malzeme/Material: Güçlendirilmiş Polyamid/Reinforced Polyamide **PA**

Saplama/Spindle: Çinko Kaplama/Metal Zinc Plated Steel **ZN**

| Stok Kod<br>Stock Code | A  | B   | C   | D   | Kg    | FM N<br>(Newton) |  |
|------------------------|----|-----|-----|-----|-------|------------------|---|
| 501 601 610            | 60 | M16 | 104 | 55  | 0,380 | 15000            | 50  |
| 501 601 615            | 60 | M16 | 154 | 105 | 0,445 | 15000            | 30  |
| 501 601 621            | 60 | M16 | 204 | 204 | 0,525 | 15000            | 20  |
| 501 602 010            | 60 | M20 | 104 | 104 | 0,645 | 20000            | 50  |
| 501 602 015            | 60 | M20 | 154 | 155 | 0,445 | 20000            | 30  |
| 501 602 021            | 60 | M20 | 204 | 204 | 0,545 | 20000            | 20  |




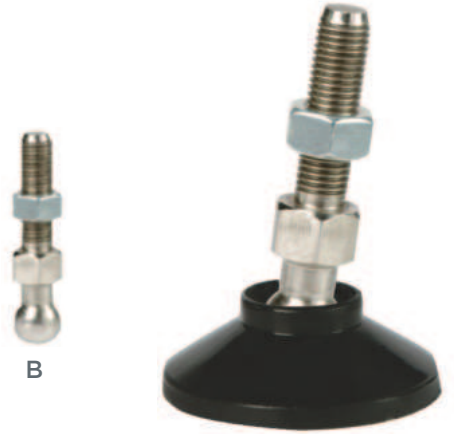
505 (Ø60) PLASTİK PABUÇ TABANI (6 KÖŞELİ PASLANMAZ ÇELİK) AISI 304 (INOX)

HARD TYPE ARTICULATED FEET (WITH SNAP RING)

Malzeme/Material: Güçlendirilmiş Polyamid/Reinforced Polyamide **PA**

Saplama/Spindle: Paslanmaz Çelik/Stainless Steel **SS**

| Stok Kod<br>Stock Code | A  | B   | C   | D   | Kg    | FM N<br>(Newton) |  |
|------------------------|----|-----|-----|-----|-------|------------------|---|
| 505 601 610            | 60 | M16 | 104 | 55  | 0,380 | 15000            | 50  |
| 505 601 615            | 60 | M16 | 154 | 105 | 0,445 | 15000            | 30  |
| 505 601 621            | 60 | M16 | 204 | 155 | 0,525 | 15000            | 20  |
| 505 602 010            | 60 | M20 | 104 | 55  | 0,645 | 20000            | 50  |
| 505 602 015            | 60 | M20 | 154 | 105 | 0,445 | 20000            | 30  |
| 505 602 021            | 60 | M20 | 204 | 155 | 0,545 | 20000            | 20  |




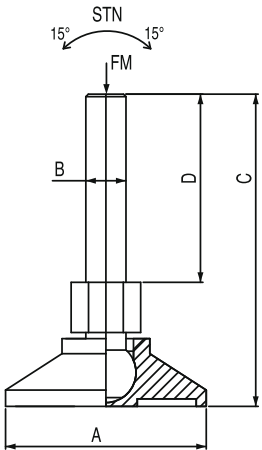
501 (Ø80) PLASTİK PABUÇ TABANI (6 KÖŞELİ METAL ÇİNKO KAPLAMA)

HARD TYPE ARTICULATED FEET (WITH SNAP RING)

Malzeme/Material: Güçlendirilmiş Polyamid/Reinforced Polyamide **PA**

Saplama/Spindle: Çinko Kaplama/Metal Zinc Plated Steel **ZN**

| Stok Kod<br>Stock Code | A  | B   | C   | D   | Kg    | FM N<br>(Newton) |  |
|------------------------|----|-----|-----|-----|-------|------------------|---|
| 501 801 610            | 80 | M16 | 104 | 55  | 0,259 | 15000            | 40  |
| 501 801 615            | 80 | M16 | 154 | 105 | 0,322 | 15000            | 30  |
| 501 801 621            | 80 | M16 | 204 | 155 | 0,404 | 15000            | 20  |
| 501 802 010            | 80 | M20 | 104 | 55  | 0,325 | 20000            | 40  |
| 501 802 015            | 80 | M20 | 154 | 105 | 0,425 | 20000            | 30  |
| 501 802 021            | 80 | M20 | 204 | 155 | 0,555 | 20000            | 20  |



505 (Ø80) PLASTİK PABUÇ TABANI (6 KÖŞELİ PASLANMAZ ÇELİK) AISI 304 (INOX)

HARD TYPE ARTICULATED FEET (WITH SNAP RING)

Malzeme/Material: Güçlendirilmiş Polyamid/Reinforced Polyamide **PA**

Saplama/Spindle: Paslanmaz Çelik/Stainless Steel **SS**

| Stok Kod<br>Stock Code | A  | B   | C   | D   | Kg    | FM N<br>(Newton) |  |
|------------------------|----|-----|-----|-----|-------|------------------|---|
| 505 801 610            | 80 | M16 | 104 | 55  | 0,259 | 15000            | 40  |
| 505 801 615            | 80 | M16 | 154 | 105 | 0,322 | 15000            | 30  |
| 505 801 621            | 80 | M16 | 204 | 155 | 0,404 | 15000            | 20  |
| 505 802 010            | 80 | M20 | 104 | 55  | 0,325 | 20000            | 40  |
| 505 802 015            | 80 | M20 | 154 | 105 | 0,425 | 20000            | 30  |
| 505 802 021            | 80 | M20 | 204 | 155 | 0,555 | 20000            | 20  |

