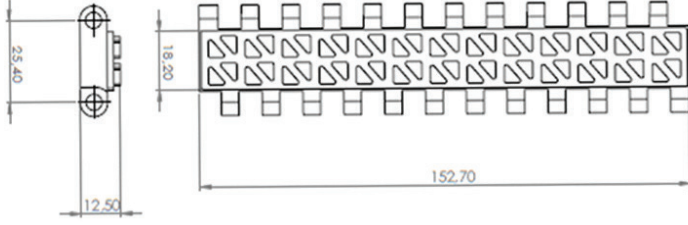



927 - 25,4 ÜSTÜ KAUCUK KAPLI HASIR BANT

 DİŞLİ : 381 - 25,4 HASIR BANT
TAHRİK DİŞLİSİ

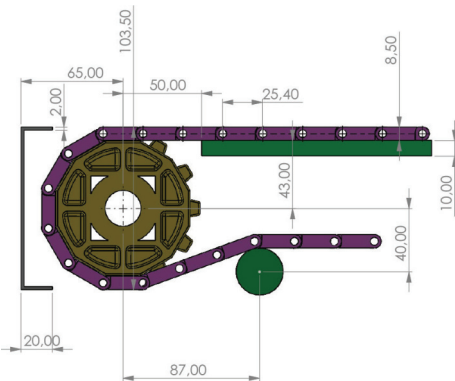
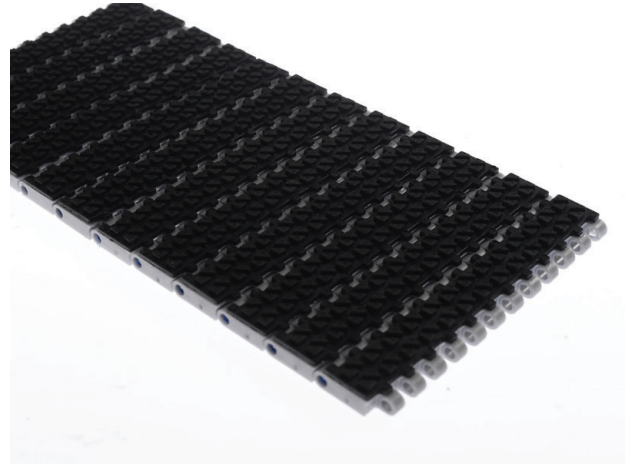


Stok Kod (Stock Code)	P	Renk (Color)	L	Malzeme (Material)	PIN	Bant Dayanımı Chain Strength (N/m)	Kg / m2	
927 BS2 K01	25,4	Beyaz/Black (B)	152,4	Poliasetal Polyacetal	PA	35200	7,500	m
927 MS2 K01	25,4	Mavi/Blue (M)	152,4	Poliasetal Polyacetal	PA	35200	7,500	m

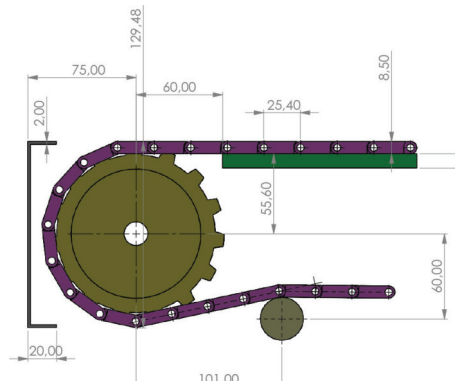
HASIR BANT STANDART MALZEME

Hatve	25.4mm
Bant Kalınlığı	12,50mm
Açıklık Oranı (%)	Kapalı yüzey (%0)
Bakla Geniřliđi	152,4 mm (bant geniřliđi ařađıdadır)
Geniřlik ölçülendirme	25 mm
Renk	Beyaz/Mavi/Gri (Standart malzeme için)
Temizlenebilirlik	Orta (FDA gıdaya uygunluk)
PIM Çapı	4,6 mm
Götürücü	Mevcut (Yükseklik: 25/50/75/100 mm)
Yan boşluk uygulaması	Mevcut (Özel boşluklu ölçülere tabidir)

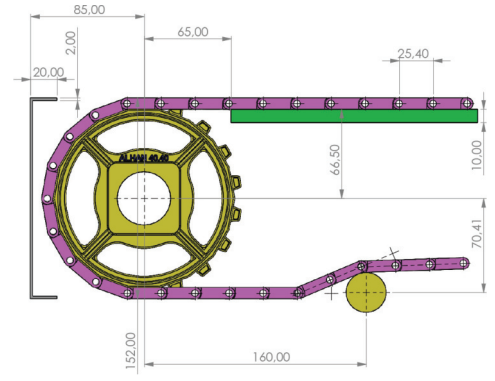
Polipropilen (PP)	+1	+110
Poliasetal (POM)	-40	+90
Polietilen (PE)	-60	+100



25.4 HASIR BAND DİŞLİ Z.12



25.4 HASIR BAND DİŞLİ Z.15

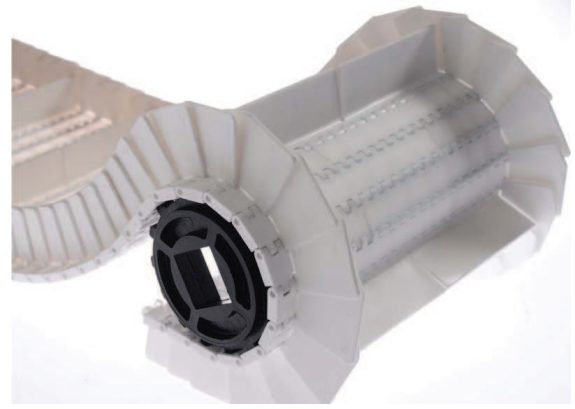
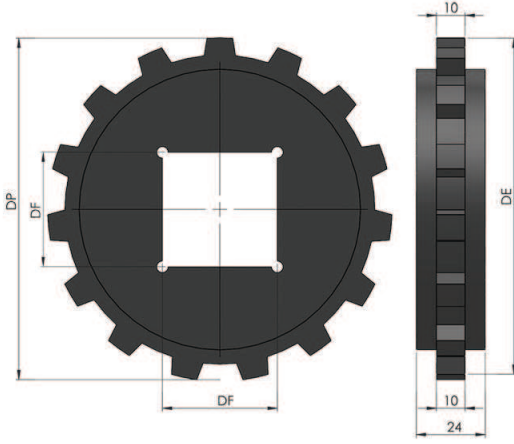
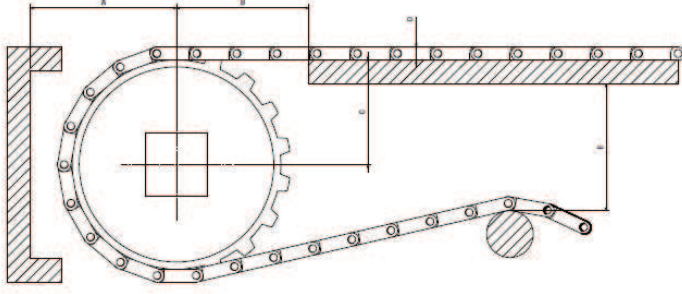


25.4 HASIR BAND DİŞLİ Z.18

381 - 25,4 HASIR BANT TAHRİK DİŞLİSİ

BANTLAR

927-25,4 KİLİTLİ DÜZ HASIR BANT
931-25,4 KİLİTLİ SÜZGEÇLİ HASIR BANT
935-25,4 KİLİTLİ DAİRESEL SÜZGEÇLİ HASIR BANT
962-25,4 MAZGALLI HASIR BANT



StokKod (Stock Code)	Z-İmalat Şekil (Manufacture)	DE	DP	DF	Kg/m ²
381 D25 Z12	12-Kalıplı/Molding	99,7	87,5	Ø25	0,120
381 D30 Z12	12-Kalıplı/Molding	99,7	87,5	Ø30	0,120
381 D35 Z12	12-Talaşlı/Sawdust	99,7	87,5	Ø35	0,120
381 D40 Z12	12-Kalıplı/Molding	99,7	87,5	40x40	0,120
381 D25 Z15	15-Kalıplı/Molding	122,2	109,9	Ø25	0,160
381 D30 Z15	15-Kalıplı/Molding	122,2	109,9	Ø30	0,160
381 D35 Z15	15-Talaşlı/Sawdust	122,2	109,9	Ø35	0,160
381 D40 Z15	15-Kalıplı/Molding	122,2	109,9	40x40	0,160
381 D60 Z15	15-Kalıplı/Molding	122,2	109,9	60x60	0,160
381 D25 Z18	18-Kalıplı/Molding	146,3	134	Ø25	0,283
381 D30 Z18	18-Kalıplı/Molding	146,3	134	Ø30	0,283
381 D35 Z18	18-Kalıplı/Molding	146,3	134	Ø35	0,283
381 D40 418	18-Kalıplı/Molding	146,3	134	Ø40	0,283
381 D40 Z18	18-Kalıplı/Molding	146,3	134	40x40	0,283
381 D60 Z18	18-Kalıplı/Molding	146,3	134	60x60	0,283