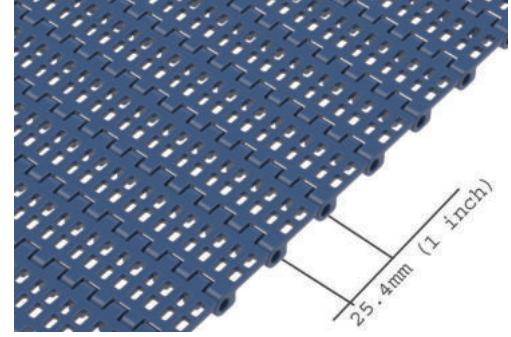
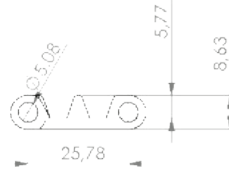
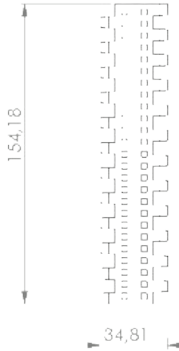



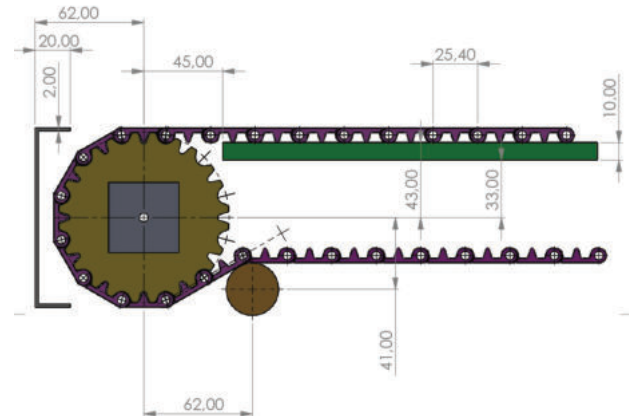
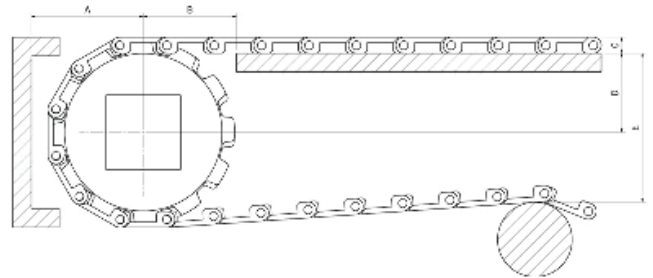
921-25,4 KÜÇÜK SÜZGEÇLİ KOLAY TEMİZLENEBİLİR HASIR BANT

 Dişli : 392



Stok Kod (Stock Code)	P	Renk (Color)	L	Malzeme (Material)	PIN	Bant Dayanımı Chain Strength (N/m)	Kg / m ²	
921 B01 K01	25,4	Beyaz/White (B)	152,4	Polipropilen Polypropylene	PP	21160	2.600	m
921 B02 K01	25,4	Beyaz/White (B)	152,4	Poliasetal Polyacetal	PA	20400	3.900	m
921 M01 K01	25,4	Mavi/Blue (M)	152,4	Polipropilen Polypropylene	PP	35200	2.600	m
921 M02 K01	25,4	Mavi/Blue (M)	152,4	Poliasetal Polyacetal	PA	34100	3.900	m

Hatve	25.4mm
Bant Kalınlığı	8,8mm
Açıklık Oranı (%)	Açık yüzey (%20)
Bakla Genişliği	152,4 mm
Genişlik ölçülendirme	25 mm
Renk	beyaz mavi gri (standart malzeme için)
Temizlenebilirlik	Mükemmel (FDA gıdaya uygunluk)
PIM Çapı	4,6 mm
Diş üstü yarı çap	Dişli boyutuna göre değişmektedir

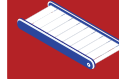


25.4 YIKANABİLİR MODEL DİŞLİ Z.12

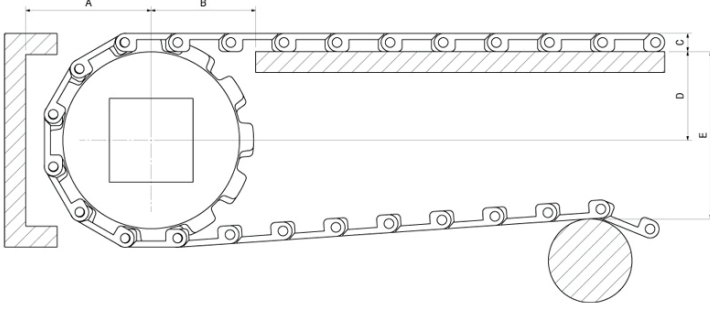
HASIR BANT STANDART MALZEME


Polipropilen (PP)	+1	+110
Poliasetal (POM)	-40	+90
Polietilen (PE)	-60	+100

392 - 25.4 KOLAY TEMİZLENEBİLİR HASIR BANT DIŞLİSİ



BANT : 921 - 923



Stok Kod (Stock Code)	Z-İmalat Şekil (Manufacture)	DE	DP	DF	Kg	
392 D25 Z12	12-Kalıplı/Molding	98	84	ø25	0,100	10
392 D30 Z12	12-Kalıplı/Molding	98	84	ø30	0,100	10
392 D40 Z12	12-Kalıplı/Molding	98	84	40x40	0,100	10